

WINCROSS®

What's New Guide

Version 18



Version 18

Copyright 1994–2018, The Analytical Group, Inc.

Editor: Peter Hilmers

All rights reserved. No part of this book may be reproduced in any form or by any electronic means, electronic or mechanical, including photocopying, scanning, recording or any information storage and retrieval system, without the express permission of The Analytical Group, Inc.

Table of Contents

New Feature Highlights for Version 18	4
Interweave Banners Directly to Excel	5
HTML Support	6
Enhanced Express Table Setup	7
Export to WinCross Executive	9
New Code Values and Value Labels List	10
Insert Row Option of the Express Table Editor	11
Enhanced Export Wizard	12
Helpful Data File Information	13
Helpful Job File Information	14
Shaded Current Line on Edit Dialogs	15
Compatibility with Latest Version of SPSS®	16

What's New in WinCross Version 18

We are excited about the many enhancements in WinCross 18. New **HTML** and **interweave banner** features bring unprecedented customizability to your tables. And with the ability to export to WinCross Executive® and bring your tables to online dashboards, we are confident that you will continue to be pleased with WinCross as your go-to cross tabulation software.

New Feature Highlights for Version 18:

- **Excel output** is now enhanced with the ability to **interweave table banners**. Four new interweave options exist to customize the worksheet/workbook output displayed. Efficiently “collate” your table output in Excel. This feature allows greater control over worksheet and workbook organization.
- WinCross now supports **HTML formatting** for tables and banners. Features included are bold, underline, italics, strikethrough, superscript, subscript, and font color/text. Specify the exact text to be changed from a single word to the entire row. When copying from a questionnaire, supported HTML Formatting will transfer directly into WinCross.
- Enhanced **Express table setup** row options are now even easier to add to tables with the new **row options “ellipsis”**. When editing a table in Express Table Setup, simply open the row options ellipsis and select the desired options. This new feature eliminates the need for having to look up any row option. Change the entire row to **BLD**= Bold, **UND** = Underline, or **ITL** = Italic with one click. A custom color can also now be applied for any given row.
- Export to WinCross Executive®, **The Next Generation of WinCross**. Use Export Job to WinCross Executive to convert a WinCross job into a file that can be uploaded for online use with WinCross Executive. Bring your projects online with interactive **dashboards, dynamic charts, and automated stat testing**. WinCross Executive is a separate product available from The Analytical Group, Inc.
- Enhanced **Factor Analysis** loading screen to provide status updates with factor analysis on a large data file.
- Advanced users working within the job file will now enjoy highlighting to make editing **easier**. This same highlight feature is also included in all dialog editing screens.
- **Express Tables from Variable Data** now provides a list of defined code values and value labels to choose from when creating a **Summary of Means** or **Summary of Frequencies** table eliminating the need to query the data.
- The **Insert Row** option of the **Express Table Editor** will now insert a new row at the end of the table when the last row is selected, alleviating the need to rearrange newly added rows.
- Our **Export Wizard** has been enhanced to include better job file table analysis and file output options.
- The **Open Data** dialog now provides helpful information about the selected data file including the file size, date and time of the file, as well as the number of records and variables.
- The **Open Job** dialog now provides helpful information about the selected job file including the file size and date and time of the file.
- Many edit dialogs now display the current line as shaded making it easier to know where you are in the dialog.
- Compatibility with the latest version of SPSS.

New Excel Interweave Banners

Previously the only supported interweave banners output PDF, RTF, or RPT. You can now interweave your Excel banners with four new options! These new options can be found under **Run | Tables | Excel Options | Worksheet Options**.

Data Options
Formatting Options
Worksheet Options
Report Options
Decimal Place Options

Non-interweave banner options

- Create each table as a separate worksheet, one banner per workbook
- Create each table as a separate worksheet, all in one workbook
- Create all tables in one worksheet, one banner per workbook
- Create one banner per worksheet, all in one workbook
- Create all tables and banners in one worksheet, one workbook

Interweave banner options

- Create each table as a separate worksheet, all in one workbook
- Create similar tables as a separate worksheet, all in one workbook
- Create similar tables as a separate worksheet, one worksheet per workbook
- Create all tables and banners in one worksheet, one workbook

With the new **interweave banner** feature you can efficiently “collate” your table output in Excel. Below is an example using the first interweave option.

	A	B
1	Table of contents	
2		
3	BANNER 1 UNWEIGHTED	
4		
5	Table S1	S1: GENDER? SELECT ONE.
6		TOTAL RESPONDENTS
7		CURRENT WAVE ONLY
8		
9	BANNER 1 WEIGHTED	
10		
11	Table S1	S1: GENDER? SELECT ONE.
12		TOTAL RESPONDENTS
13		CURRENT WAVE ONLY
14		
15	BANNER 2 UNWEIGHTED	
16		
17	Table S1	S1: GENDER? SELECT ONE.
18		TOTAL RESPONDENTS
19		
20	BANNER 2 WEIGHTED	
21		
22	Table S1	S1: GENDER? SELECT ONE.
23		TOTAL RESPONDENTS

As you can see there are four different banners that have been ran by a single gender table. Instead of each banner having its own sheet all of the gender tables are collated together on a single sheet. This new feature allows for greater control over workbook and worksheet organization.

HTML Support

WinCross now supports HTML formatting for tables and banners! Features include bold, underline, italics, strikethrough, superscript, subscript, and font color/text.

The new HTML feature can be found within the edit widow on Express table setup and regular table setup. You have the ability to change the entire title, or a specific word/phrase.

Title **B** *I* U ~~S~~ ^{x²} _{x₂} ▲ F (23/1000)

S1. GENDER? SELECT **ONE**.

Here's an example of bolding the word 'one'.

Title **B** *I* U ~~S~~ ^{x²} _{x₂} ▲ F (30/1000)

S1. GENDER? SELECT **ONE**.

The HTML tags are stored within the raw job file and can be edited through the View | Job File interface.

```
TS1^1
OR,OV,SU,0%,SF,S1,P0,V2,SA,SP
S1. GENDER? SELECT <b>ONE</b>.
TOTAL RESPONDENTS^TN^1
MALE^ S1 (1) ^
FEMALE^ S1 (2) ^
```

HTML can also be taken directly from a questionnaire. Another great feature using the HTML support.

When copying and pasting the below line into WinCross the bolding of 'one' will be transferred without you having to manually go back in bold this specific word.

S1. Please indicate your gender. Select **one**.

1. Male
2. Female

As you can see from the screenshot below even the specific text from the questionnaire is transferred directly into WinCross.

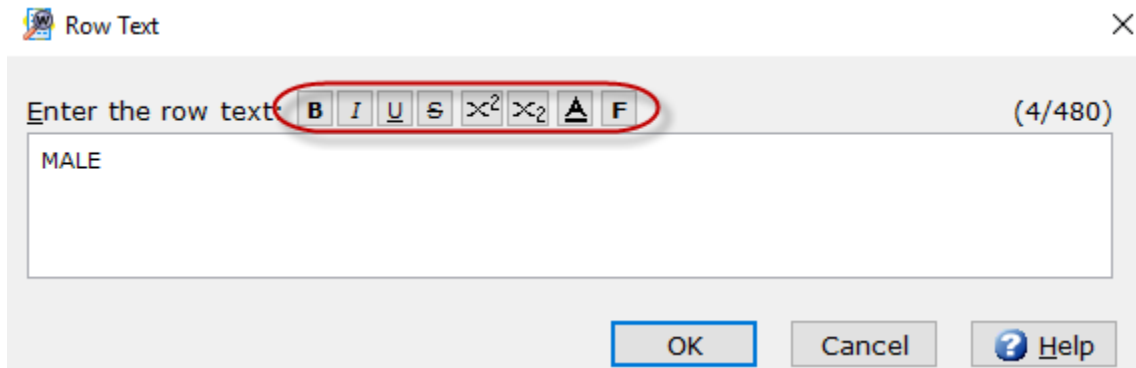
```
TS1^1
OR,OV,SU,0%,SF,S1,P0,V2,SA,SP
<font name="Calibri" size="11" color="#080000">S1. Please indicate your gender.
```

Enhanced row text and option 'ellipses'

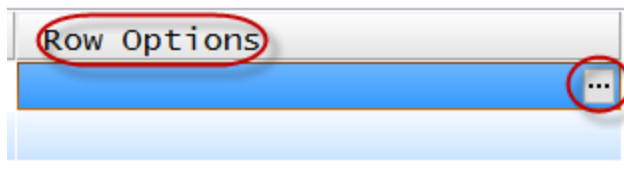
Similar to the table title you can now change the text for a specific row. Within express table setup there is a new ellipsis on each row.

#	Active	Row Text
1	Y	MALE
2	Y	FEMALE

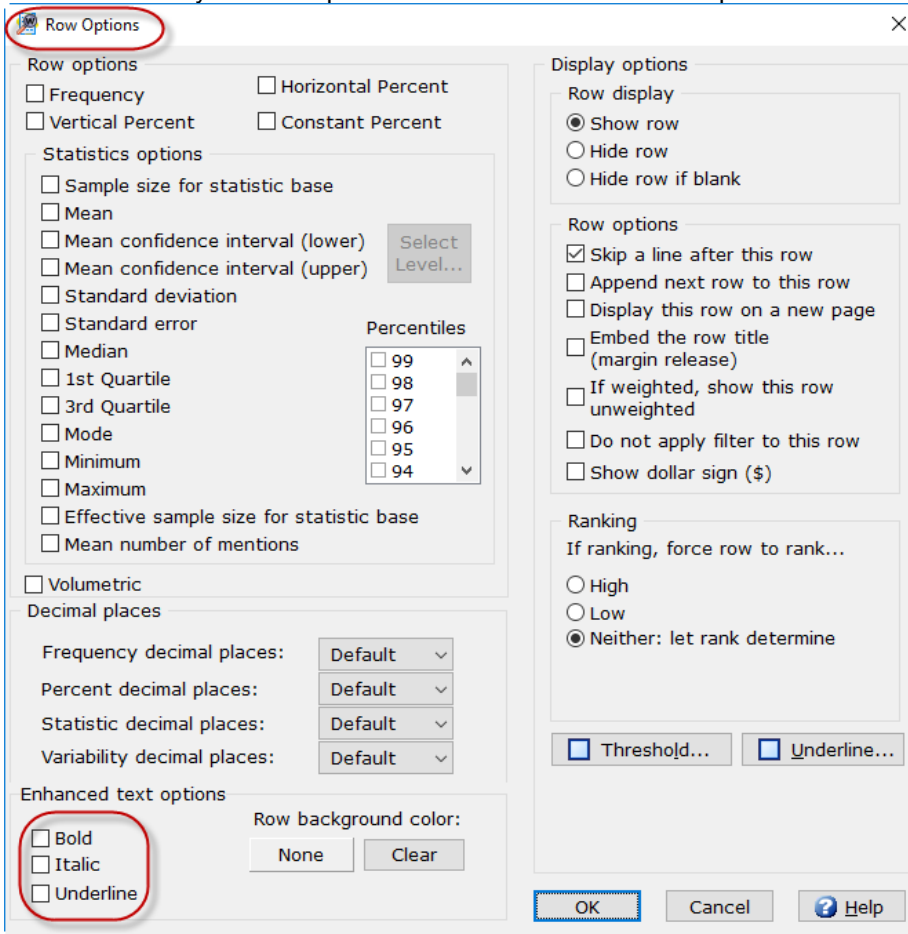
When activated you will be presented with the text changing options.



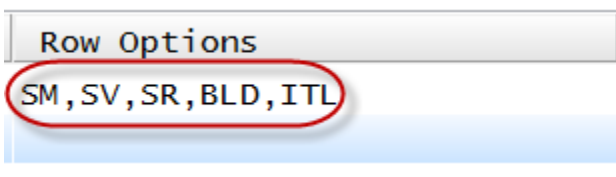
It is now easier than ever to add specific row options to individual, or multiple rows at once. In the past if you wanted to apply a specific option to a row you would need to look through row option help to find the appropriate code to add. Now with the new ellipses WinCross does all the work for you. Within express table setup there is a new ellipse placed on each row.



When activated you will be presented with all available row options.

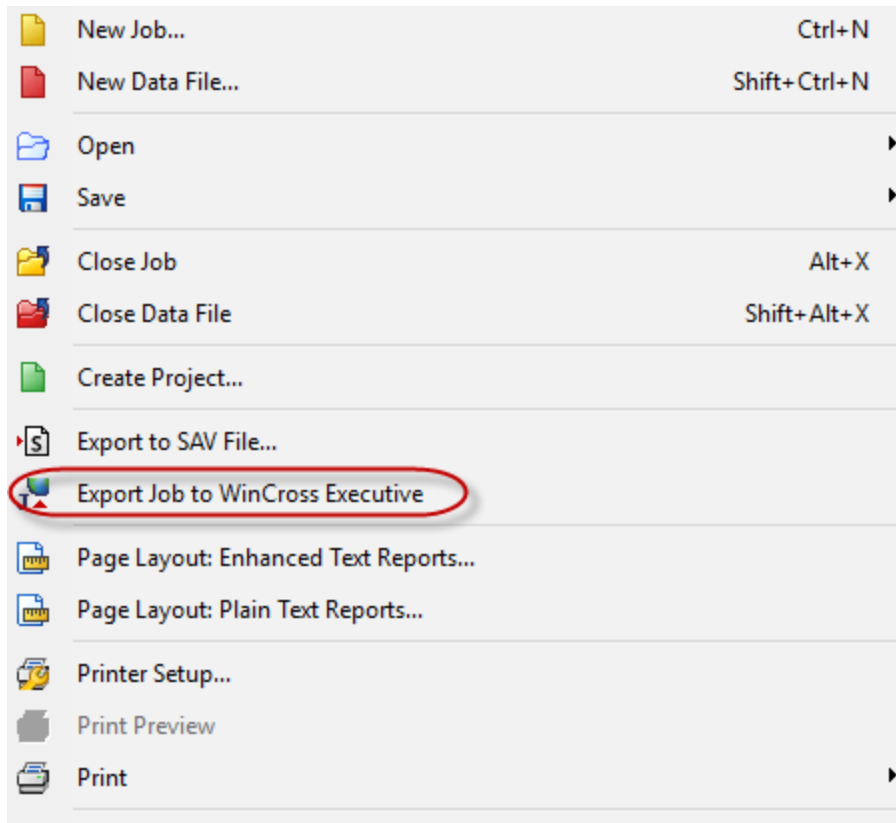


After you select the desired options these options will be placed on the row. You can then easily copy and paste these options onto multiple rows.

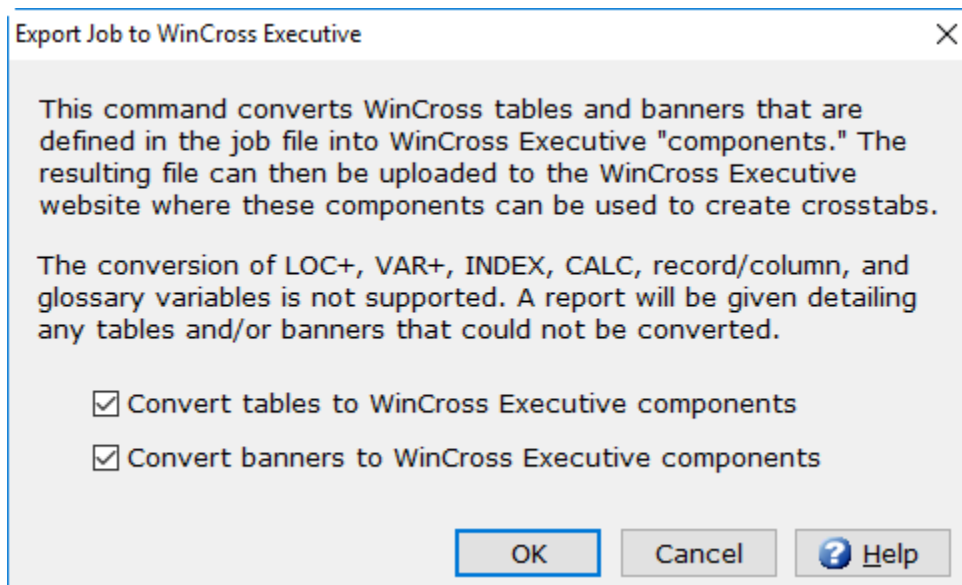


WinCross Executive

You can now link directly to **WinCross Executive**, our new web-based file sharing and **Dashboard** solution from the **File** menu in **WinCross 18**.

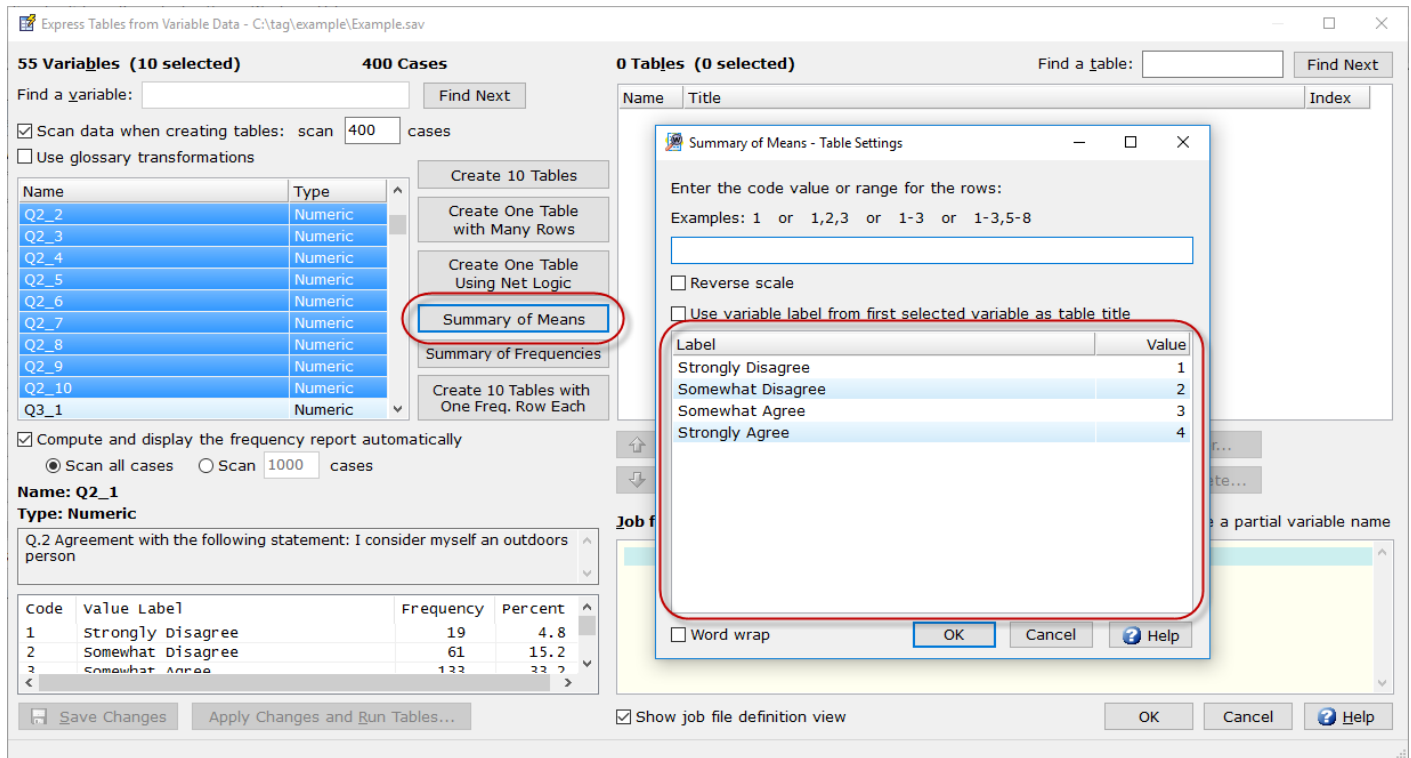


When selected WinCross will create a .WCEC file that can be uploaded to WinCross Executive to create online dashboards. WinCross converts the existing tables and banners into components that are then used to create online interactive online dashboards.

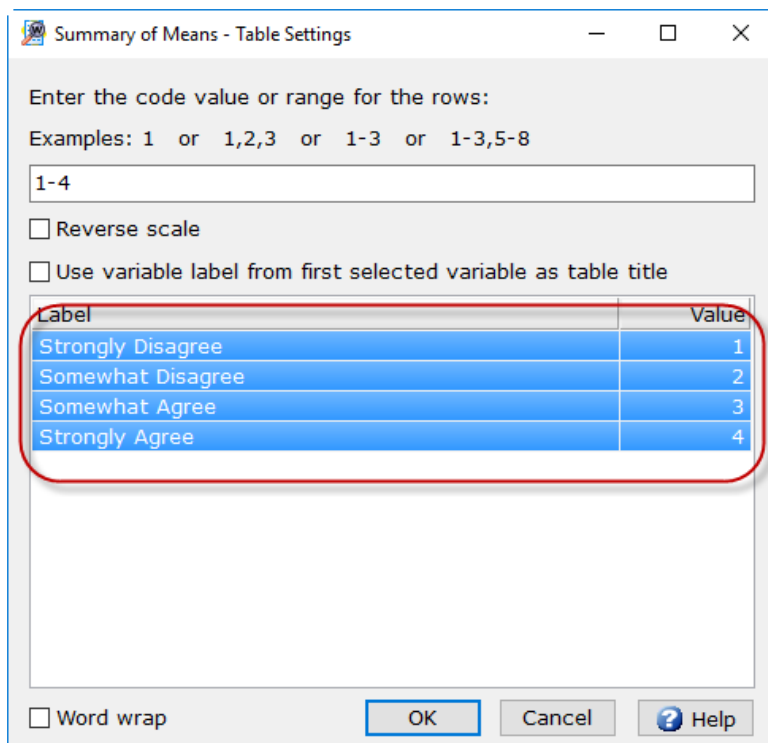


New Code Values and Value Labels List

Express Tables from Variables Data now provides a list of defined code values and value labels to choose from when using the **Summary of Means** or **Summary of Frequencies** options for creating tables.



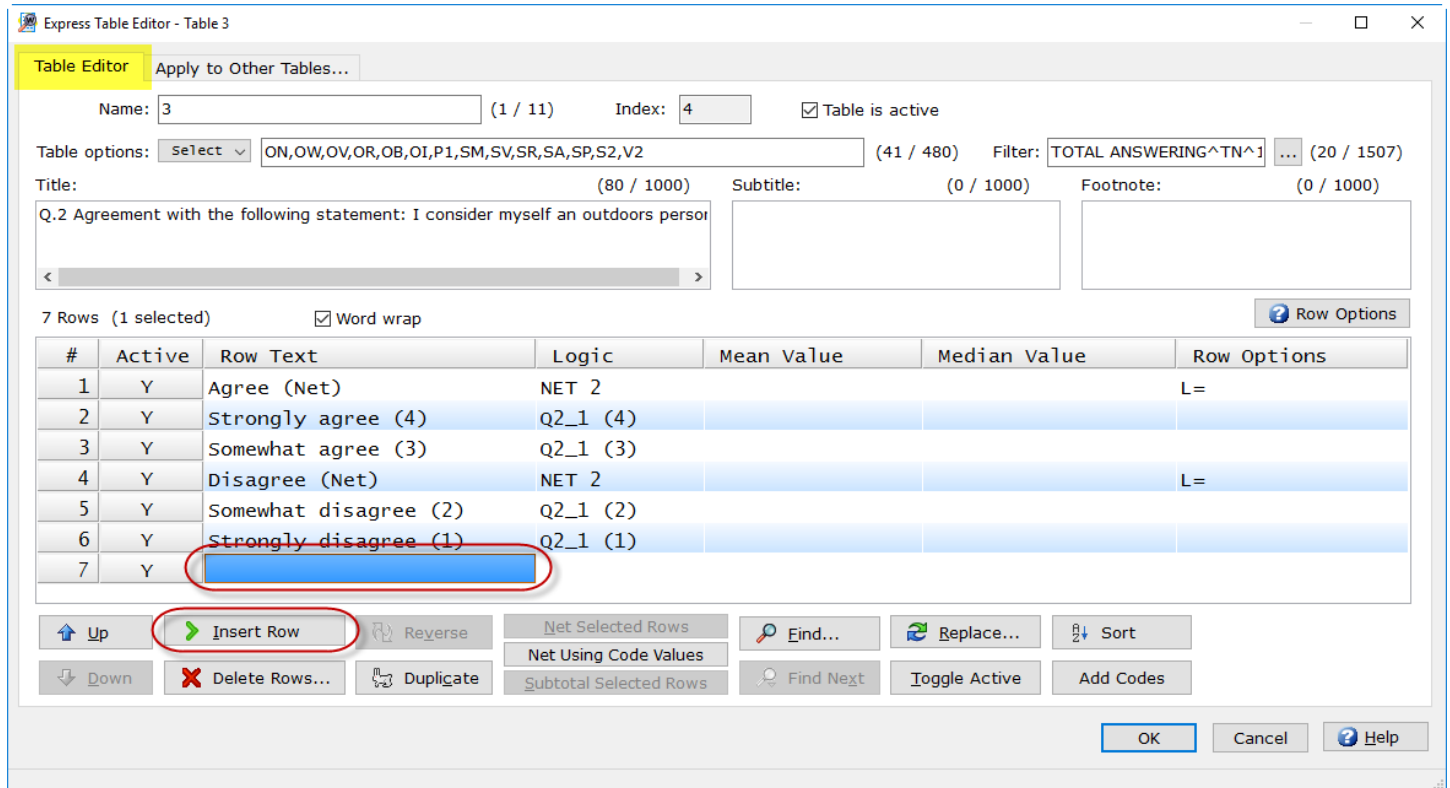
You can now highlight the code values in the list to be included in the **Summary of Means** or **Summary of Frequencies** table instead of entering the codes separated by commas or entered as a range.



See the **WinCross** online **Help** topic "*Setup|Express Tables from Variable Data*" for more detailed information about creating **Summary of Means** and/or **Summary of Frequencies** tables.

Insert Row Option of the Express Table Editor

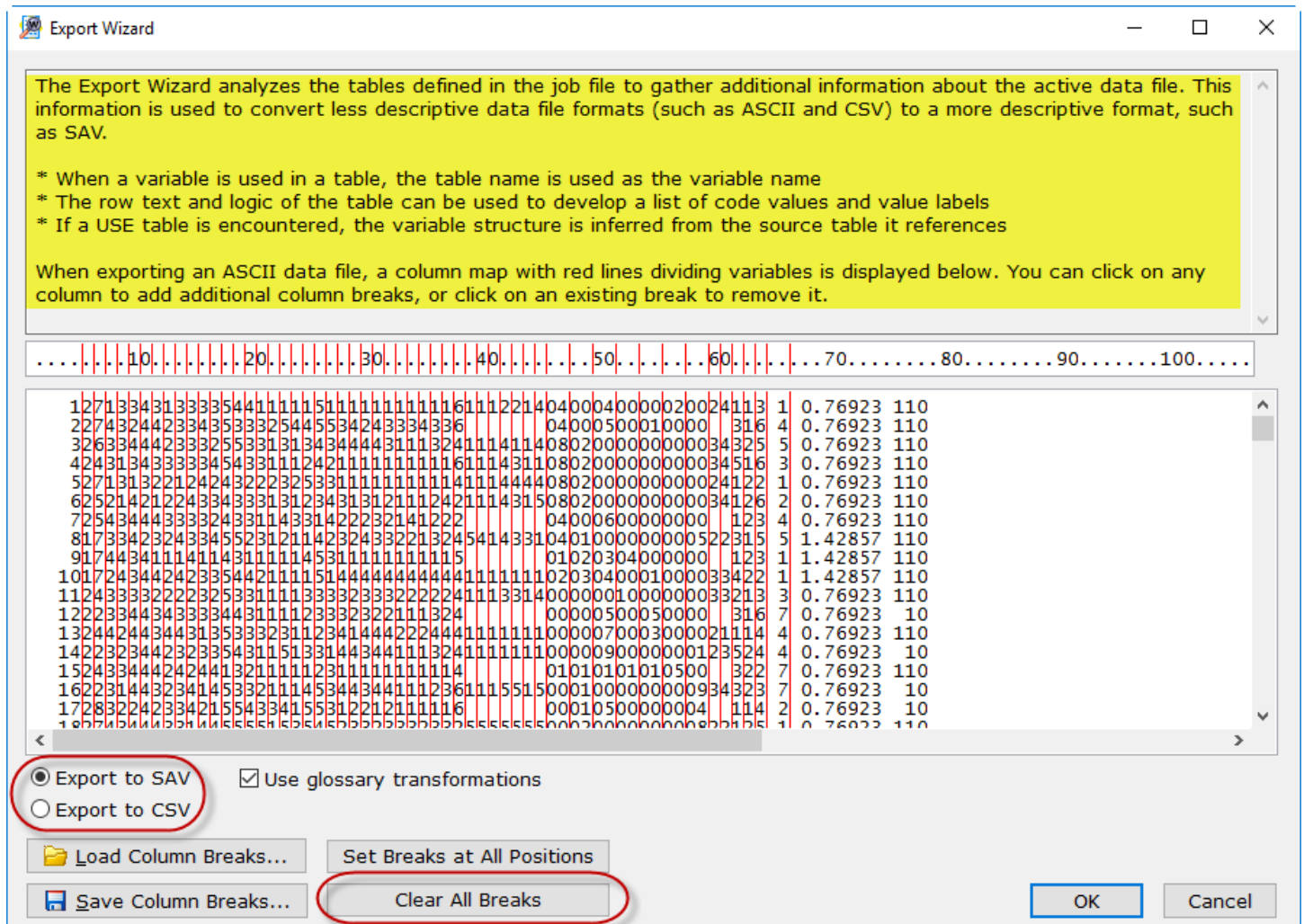
When the last row in a table is selected and the **Insert Row** option of the **Express Table Editor** is selected, the new row is inserted as the last table row instead of before the selected row.



See the **WinCross** online **Help** topic "*Express Table Editor|Table Editor tab*" for more detailed information about the **Express Table Editor**.

Enhanced Export Wizard

The **Export to SAV File** option on the **File** Menu has been enhanced to include better job file table analysis and file output options.

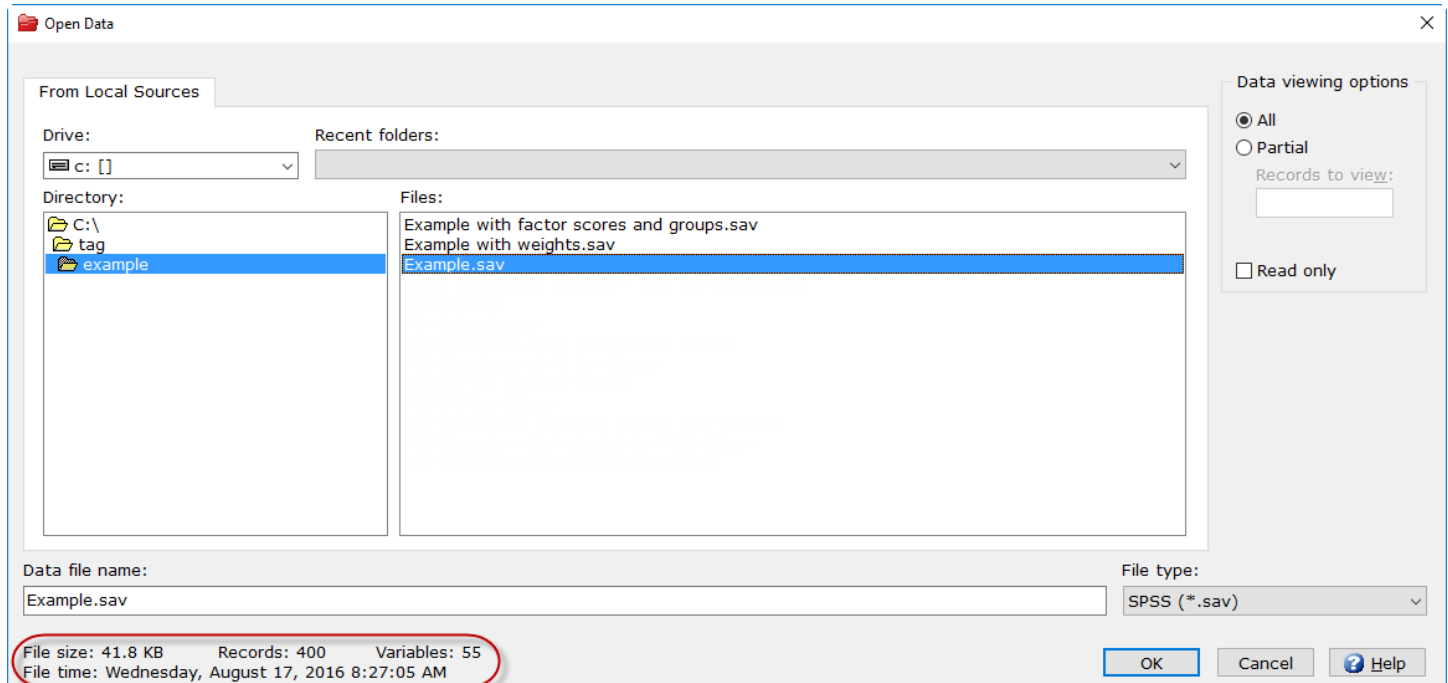


You can now export files to ASCII comma-delimited (*.csv) format and the new **Clear All Breaks** option makes it easy to clear all of the preset breaks so that you can enter your own.

See the **WinCross** online **Help** topic “*Export to SAV File*” for more detailed information about the **Export Wizard**.

Helpful Data File Information

The **Open Data** dialog now provides helpful information about the selected data file.

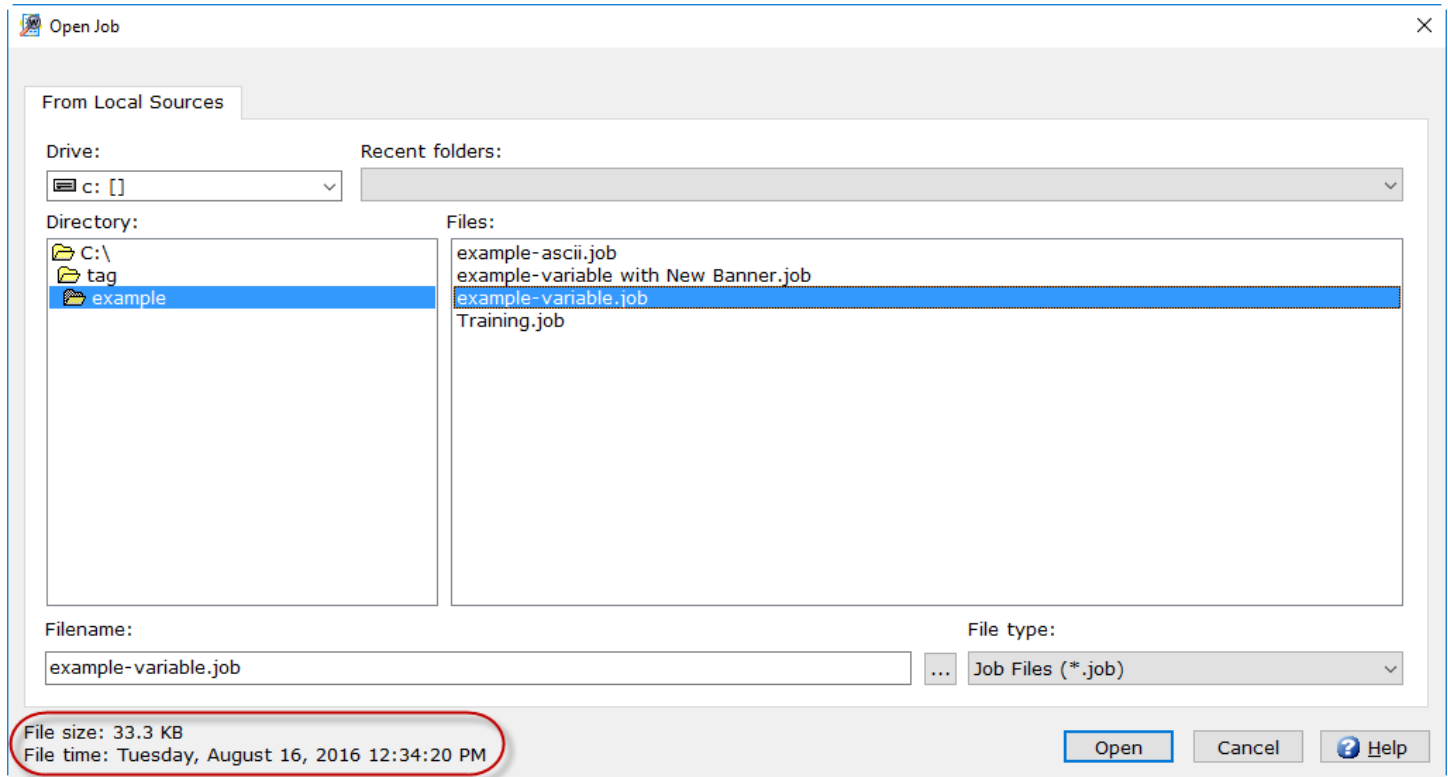


This new information includes the file size, the file date and time, the number of records and the number of variables. This information can be helpful to confirm that you are selecting the appropriate data file.

See the **WinCross** online **Help** topic "*Open Data*" for more detailed information about the **Open Data** dialog.

Helpful Job File Information

The **Open Job** dialog now provides helpful information about the selected job file.



This new information includes the file size and the file date and time. This information can be helpful to confirm that you are selecting the appropriate job file.

See the **WinCross** online **Help** topic “*Open Job*” for more detailed information about the **Open Job** dialog.

Shaded Current Line on Edit Dialogs

Many edit dialogs now display the current line as shaded making it easier to know where you are in the dialog.

The screenshot shows the 'Express Tables from Variable Data' dialog box. The top section displays '55 Variables (0 selected)' and '400 Cases'. A search bar for variables is present. Below this, there are checkboxes for 'Scan data when creating tables' (set to 400 cases) and 'Use glossary transformations'. A list of variables (RESP, GENDER, Q1-Q7) is shown with their types (all Numeric). On the right, a table of 66 tables is listed, with the second table selected. Below the table list are buttons for 'Up', 'Down', 'Reumber...', 'Reindex...', 'Duplicate', 'Edit...', 'Select All', 'Filter...', 'Format', and 'Delete...'. The 'Job file definition' view is open, showing a list of variables and their values. The current line being edited is highlighted in yellow. The list includes 'TOTAL ANSWERING ATN^1' and 'Less than 1 hour per week (.5)^'. A red circle highlights the current line being edited.

This helpful tool will simplify trying to identify the current line being edited.

Compatibility with Latest Version of SPSS

WinCross 18 is compatible with SPSS version 25. For compatibility with WinCross, we recommend saving files in SPSS using **Locale (code page) encoding**.